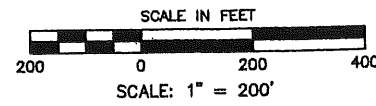


NE 1/4, SEC. 5, T.27 N., R.7 E. W.M. 1" = 200'

NW 1/4, SEC. 5, T.27 N., R.7 E. W.M. 1" = 200'

BM 3200

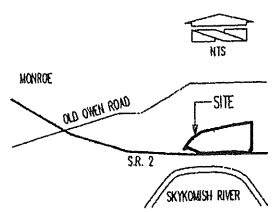
BM 3200



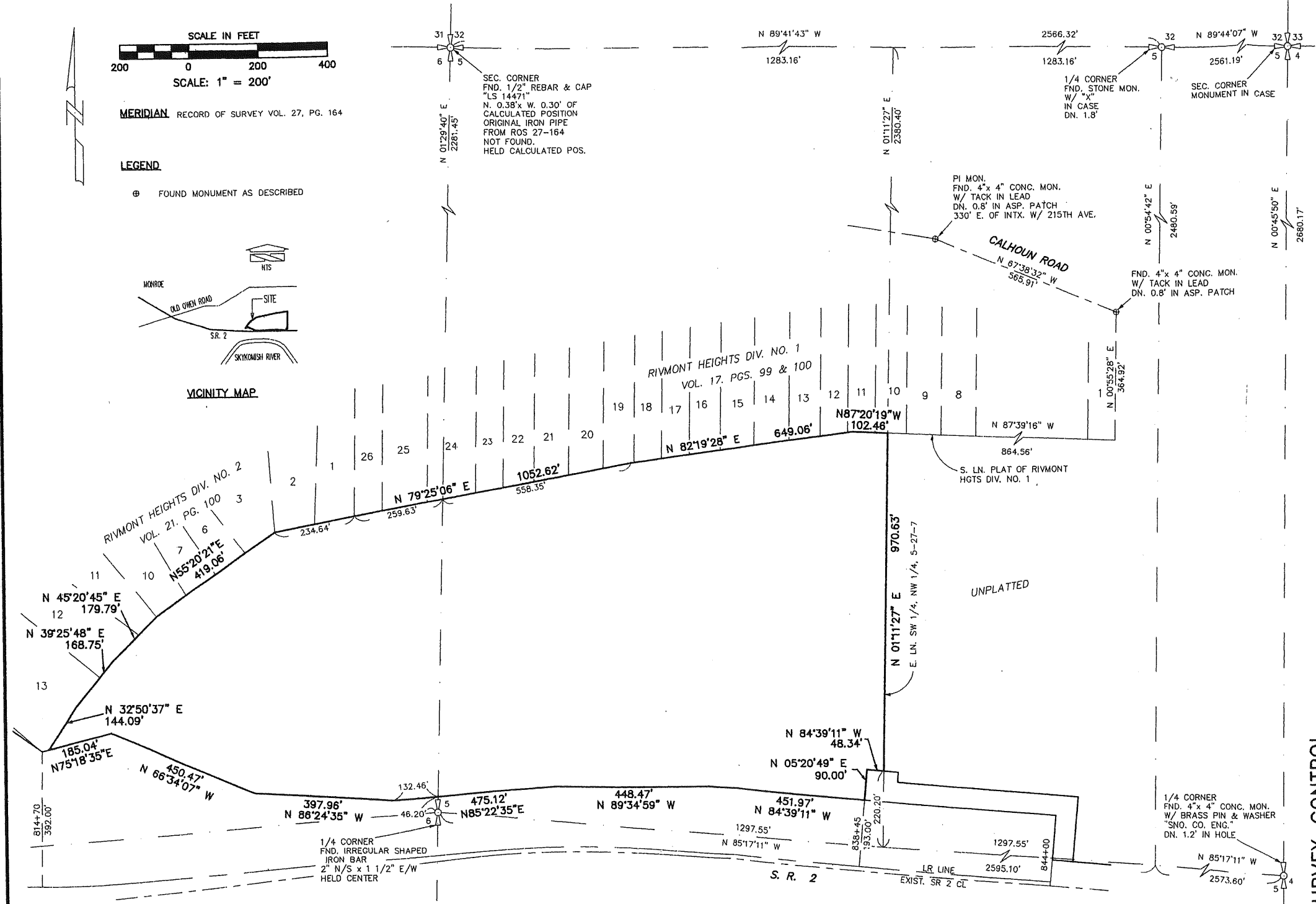
MERIDIAN RECORD OF SURVEY VOL. 27, PG. 164

LEGEND

⊕ FOUND MONUMENT AS DESCRIBED



VICINITY MAP



REFERENCES

- RECORD OF SURVEY VOL. 27, PG. 164
- RECORD OF SURVEY VOL. 48, PG. 117
- PLAT OF RIVMONT HEIGHTS DIV. NO. 1 VOL. 17, PGS. 99-100
- PLAT OF RIVMONT HEIGHTS DIV. NO. 2 VOL. 21, PG. 100
- "WETLAND DELINEATION REPORT MAP FOR HERITAGE BAPTIST FELLOWSHIP" BY WETLANDS RESOURCES, INC. WRI JOB. #99312, DATED DEC. 13, 1999
- "PRIMARY STATE HIGHWAY NO. 15 (SR 2)" BY WASH STATE DEPT. OF TRANSPORTATION (WSDOT). SHEETS 3 AND 4 OF 11, APPROVED MAY 6, 1949
- "WESTWICK ROAD TO NORTH MONROE INTERCHANGE" RIGHT OF WAY AND LIMITED ACCESS. SHEETS 16 AND 17 OF 17, DATED APRIL 1, 1971

Mead Gilman & Assoc.
 PROFESSIONAL LAND SURVEYORS
 P.O. BOX 289, WOODINVILLE, WA 98072 (425) 486-1252

JOB NO.: 02203
 DATE: 04-30-03
 DRAWN BY: DEB
 CHECKED BY: TG

SHEET: 2 OF 3
 SCALE: 1" = 200'



SURVEY CONTROL

PROJECT: HERITAGE CHURCH
 SHORT PLAT 1999005

CLIENT: HERITAGE BAPTIST CHURCH, MONROE, WA

S.W. 1/4, N.W. 1/4 SEC 5, TWP 27 N, R 7 E, W.M. &
 S.E. 1/4, N.E. 1/4 SEC 6, TWP 27 N, R 7 E, W.M.